

# FreeSpeak II™ wireless beltpack

## Quick Start Guide



A FreeSpeak II wireless beltpack gives you simultaneous access to up to five channels of talk/listen communication, with the ability to switch among them as desired. It communicates with the following FS II components:

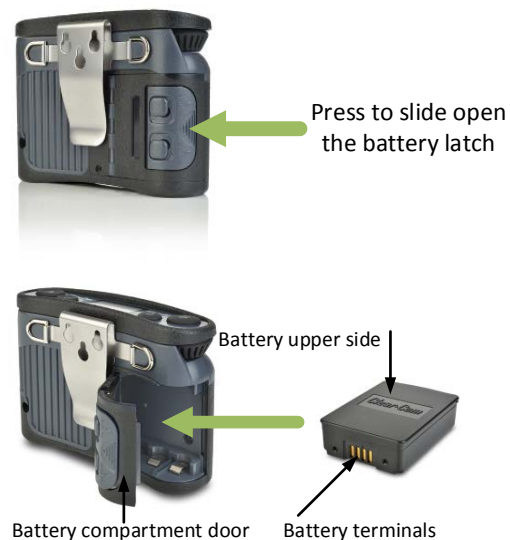
- The Base station (FSII-BASE) that routes communication to and from the beltpacks and other audio devices.
- Transceiver/Antennas (FSII-TCVR-19, FSII-TCVR-24) that provide custom coverage zones in which the beltpacks operate.
- Antenna splitters (PD2203) that run up to 5 separate transceiver/antennas.

For more information about the system, see the **FreeSpeak II User Guide**.

## Charging the beltpack

Use your thumb to slide open the battery latch, and insert the battery into the battery compartment with the battery terminals facing inwards. The beltpack can use a rechargeable Li-Ion battery or three AA batteries. A dedicated drop-in battery charger can charge up to five Li-Ion batteries simultaneously. You can also insert the beltpack containing the battery onto the charger.

You can also recharge batteries by using the supplied USB cable.



## Using the Beltpack

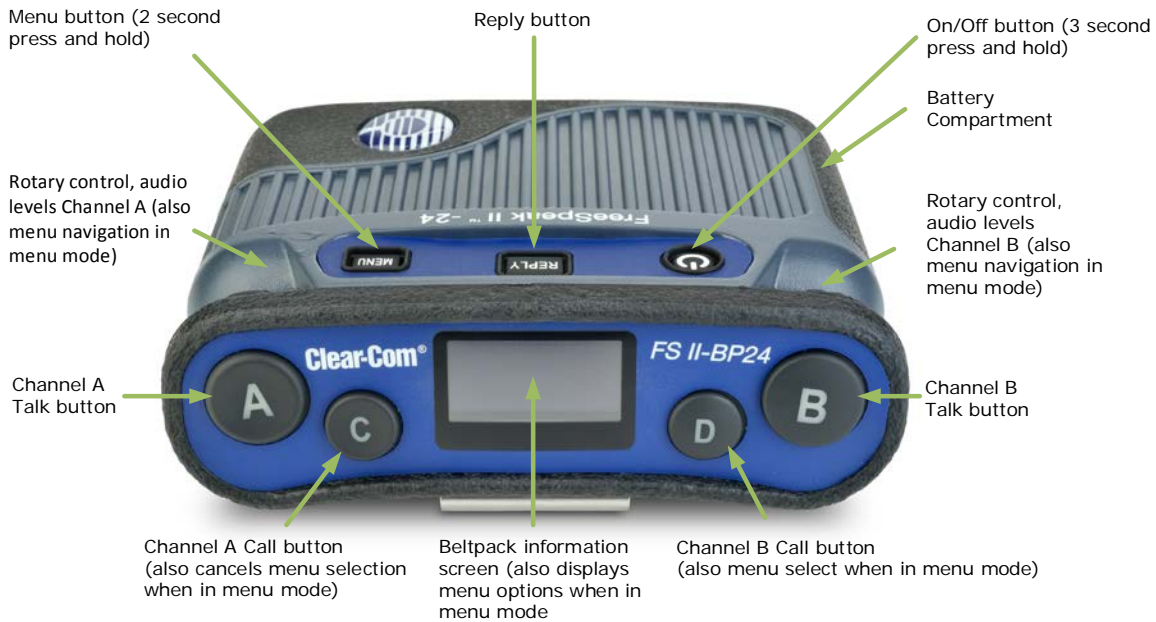
Ensure the beltpack has a charged battery and press and hold the recessed power button for three seconds to switch it on. If you are using the beltpack with a FreeSpeak II Base station, the system has a default audio set-up so the system can simply be wired and powered before basic use. The default set-up has two partyline (conference) audio channels (A and B). Each channel talks to:

- All the beltpacks on that channel
- The head set on the Base station.

To turn the beltpack off, press and hold the power button for three seconds.

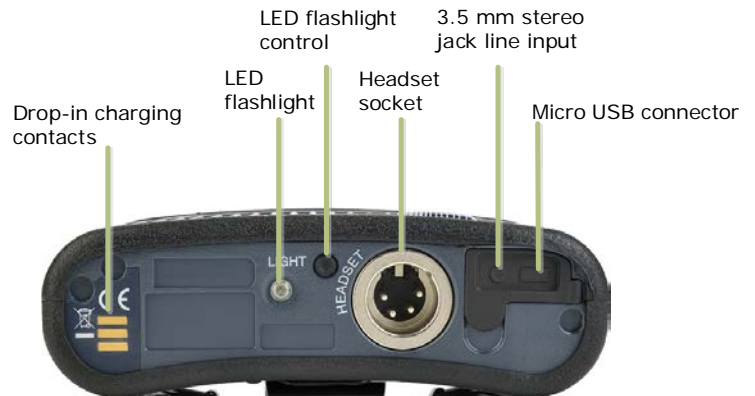
To customize an audio channel configuration, please refer to the **FreeSpeak II User Guide**.

## Quick Start Guide | FreeSpeak II™ wireless beltpack (FSII BP19, FSII BP24)



The beltpack has four keys labelled A, B, C, and D. You can program each of these keys to determine their communication destinations, and the type of communication possible.

- 1) Connect a headset, using the XLR connector on the base / rear of the beltpack.
- 2) Press the appropriate key. While the key is held down, audio transmits on that channel. When the key is released, audio no longer transmits. To latch a key on for hands-free use, quickly tap the key. Press the key to release the latch.
- 3) Speak into the headset microphone.
- 4) To adjust the volume of incoming audio for a channel, turn the appropriate rotary control.
- 5) You can configure the beltpack Reply key to reply to incoming calls or to call a specified destination. See the **FreeSpeak II User Guide**.



**FS II Beltpack connectors**

## Entering and exiting Menu mode

Use **Menu mode** to:

- Configure the settings for the beltpack
- Read beltpack information such as software version
- Perform a site survey to maximize signal strength and coverage.

To enter Menu mode, press and hold the **Menu key** for three seconds. To exit Menu mode, press the **Menu** key again. For more information about using Menu mode on the beltpack, see the **FreeSpeak User Guide**.

Copyright © 2015 HME Clear-Com Ltd. All rights reserved.